

BQF 24 / BQF 28 with rotor pump



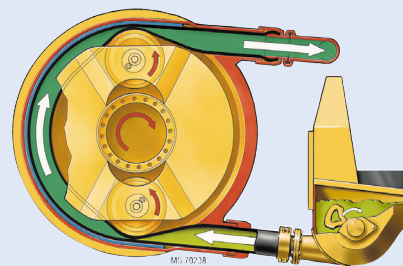
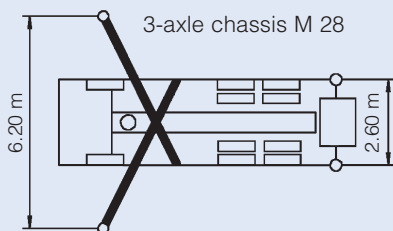
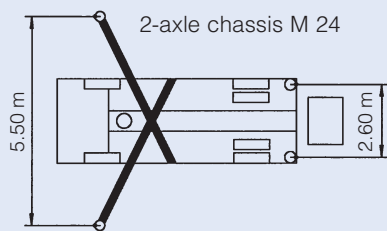
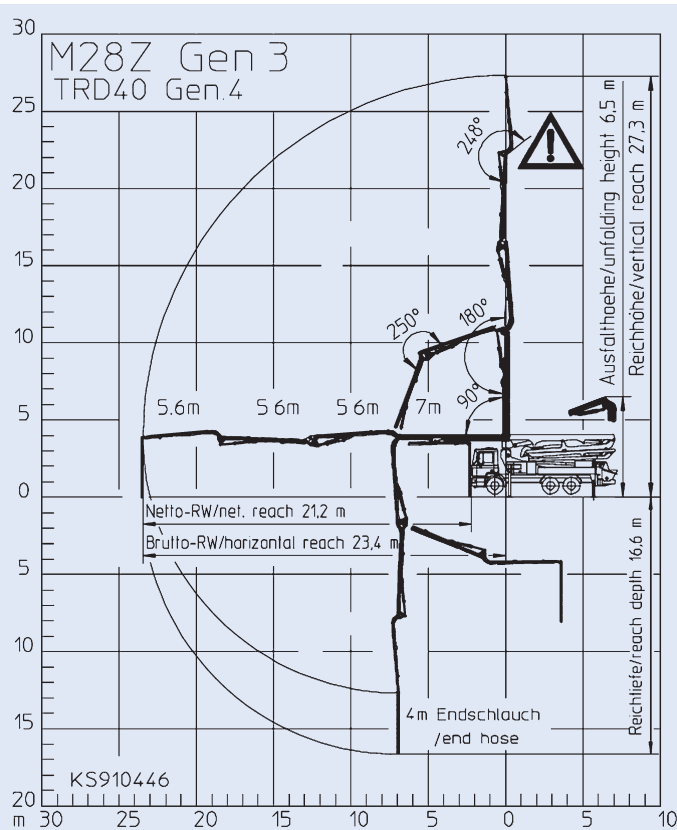
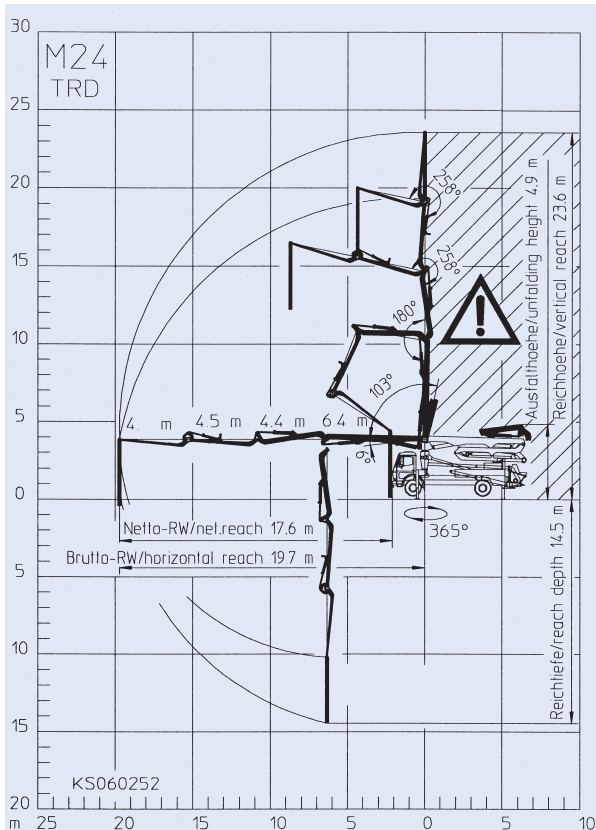
An ideal combination of a wide horizontal reach and large weight reserves

The rotor pump – economic and powerful

- With the rotor pump, almost 100 % of the material in the hopper can be placed in the construction site. This leaves hardly any concrete residue and can save additional trips to the waste disposal areas.
- The rotor pump can be cleaned quickly and easily using little water
- In the rotor, only the delivery hose comes into contact with the concrete. The delivery hose is therefore the only wear part. The pump will be like new again when this is replaced.
- Even concrete with broken material that has a grain size of up to 32 mm can be pumped efficiently, provided that it has a high proportion of fines.
- The rotor pump conveys the most difficult materials, including screed, foam concrete, liquid concrete and lightweight concrete



- The output can be adjusted infinitely between 0 and 80 m³/h. The concrete can be placed precisely.
- The rotor pump makes little noise and runs quietly. It pumps evenly and continuously with low pressure peaks.
- Hose extensions can be used, even with a 28 m boom



Technical data

Boom M 24

Folding type	Z-fold (Z)
Vertical reach	23.6 m
Horizontal reach	19.7 m gross
Depth of reach	14.5 m
Unfolding height	4.9 m
Length endhose	4 m
Delivery lines	DN 125 max 85 bar
Slewing range	365°
Support width front/rear	5.5 m/2.6 m

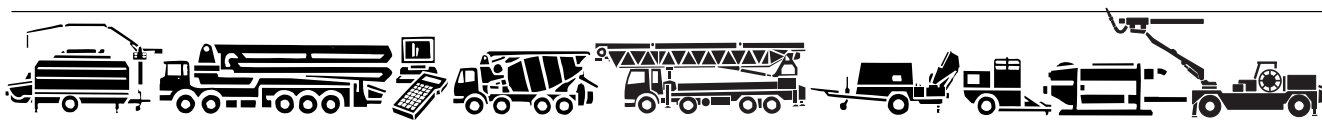
Boom M 28

Folding type	Z-fold (Z)
Vertical reach	27.3 m
Horizontal reach	23.4 m gross
Depth of reach	16.6 m
Unfolding height	6.5 m
Length endhose	4 m
Delivery lines	DN 125 max 85 bar
Slewing range	365°
Support width front/rear	6.2 m/2.6 m

Pump R 81 Q

Ouput	80 m³/h
Concrete pressure	25 bar
Delivery hose-ø	125 mm
Hopper volume	400 l
Rotor speed	35 1/min

All data maximum theoretical.



Putzmeister products and services

PM-Concrete pumps

PM-Systems Engineering PAT

PM-Telebelt

PM-Mörtelmaschinen GmbH

PM-Dynajet High Pressure Cleaners

PM-Services

PM-Concrete Project Division CPD

PM-Consulting and Data Technology PCD

PM-Academy



Putzmeister AG
 Max-Eyth-Str. 10 · D-72631 Aichtal
 P.O.Box 21 52 · D-72629 Aichtal
 Tel. +49 (71 27) 599-0
 Fax +49 (71 27) 599-520
<http://www.putzmeister.de>
 E-mail: pmw@pmw.de