

# Truck-mounted concrete pump M 28-4

A class of its own for multifunctional applications

**Putzmeister**

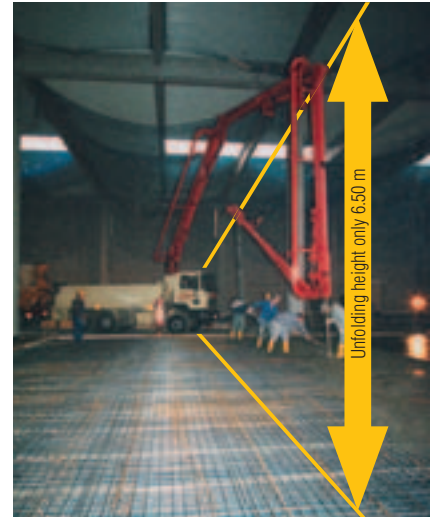


# More net reach, more flexibility, more cost-efficiency with the M 28-4

## The flexible 28 m Z-fold boom reaches parts where other booms would have long since given up

- The M 28-4 has 1.7 m more net reach allowing an approx. 16 % more useable working area in comparison with a 26 m boom
- Thanks to the Z-fold, the M 28-4 is quickly ready for use

- The flexible boom with 4 short arms has optimal slip characteristics to get around any obstacle
- With an unfolding height of just 6.50 m, ideal for pouring jobs in halls or under bridges
- The compact folded up arm assembly presents no overhang when manoeuvring



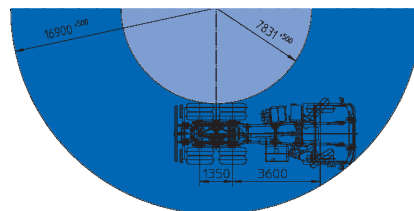
## The TRD support saves space and allows greater net reach

- Minimal support area: to the front, the M 28-4 needs only 5.60 m on 3-axle vehicle (6.20 m on 2-axle vehicle) and to the back, the vehicle width of 2.60 m is sufficient
- Thanks to the direct telescopic support legs, job-site obstacles are no problem

The flexible boom with its Z fold system can reach difficult-to-access concrete placement sites without any problems

## Optimum versatility thanks to its high weight capacity and comprehensive range of accessories

- Fully operational, equipped with useful accessories, the M 28-4 is far below the limits of 26 t total permissible weight (for 3-axle chassis approx. 21 t). Low weight is easy on the vehicle and increases its service life.
- The machine can be easily and flexibly equipped with hose and tube magazines, storage racks, tool boxes etc.



- With a wheelbase of just 3.60 m (short-stroke pump) or 3.90 m (long-stroke pump), the M 28-4 is extremely agile and easy to manoeuvre, even on restricted construction sites.

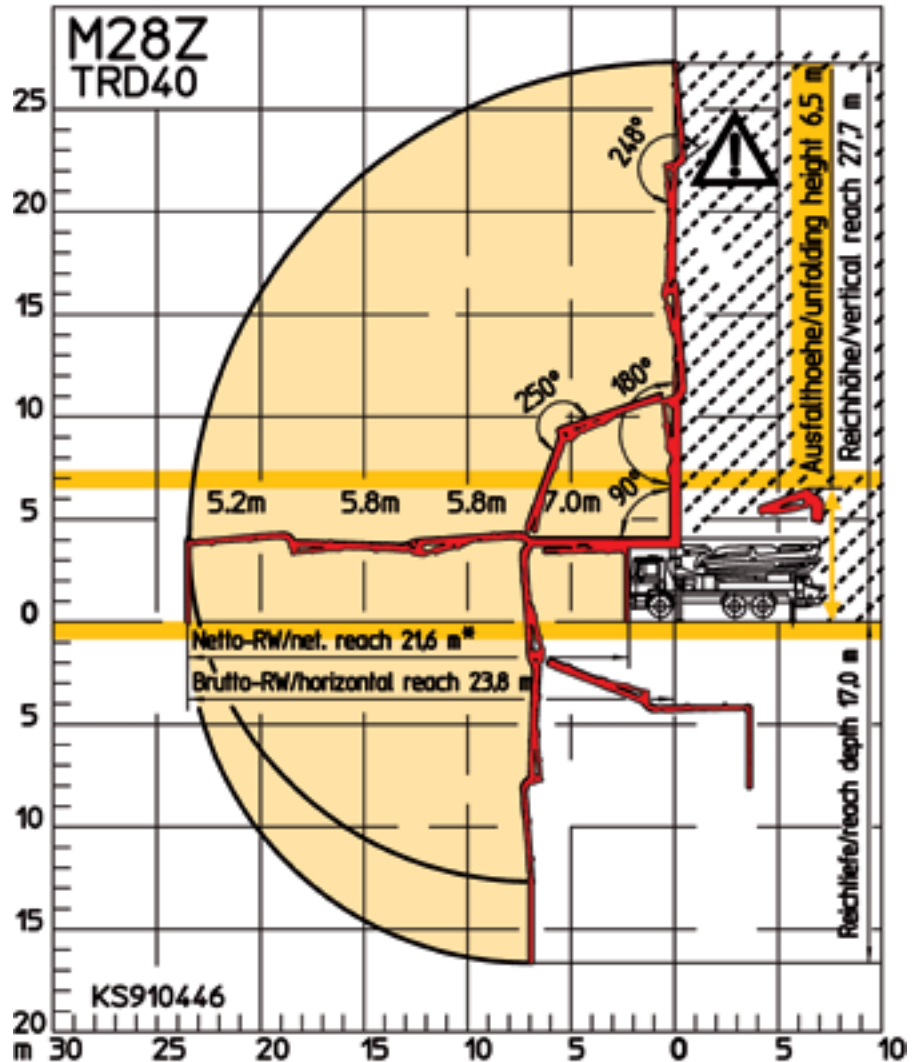
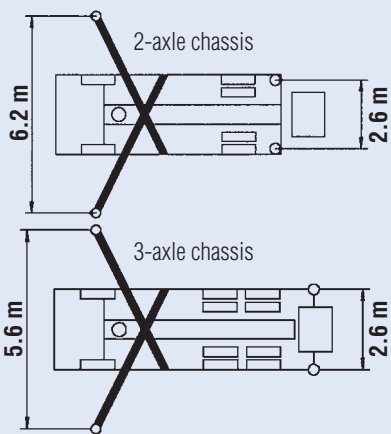


The container can be lowered hydraulically to make handling the pipes and hoses simpler (option, only available in conjunction with a 4200 mm wheelbase)

## Technical data

### Boom M 28-4

Folding type	4-section Z-fold (Z)
Vertical reach	27.7 m
Horizontal reach	23.8 m gross
Reach depth	17.0 m
Unfolding height	6.5 m
Length endhose	4 m
Delivery lines	DN 125, max. 85 bar
Slewing range	365°
Support width	front / rear
2-axle chassis	6.2 m / 2.6 m
3-axle chassis	5.6 m / 2.6 m



### Robust technology: pumps, hydraulic system and hopper

- Proven reliability – the S-transfer tube
- Free flow hydraulic system in a closed circuit (almost the only manufacturer)
- Fewer switchovers thanks to large cylinder volumes

- Extremely wear-resistant
- Very smooth running
- Low-maintenance modular pump unit
- High cylinder fill level
- Longer service life thanks to internally chromed delivery cylinders, as standard
- Low hopper fill level of approx. 130 cm (unsupported)
- Operator-friendly hopper
- Powerful pumps available for any application

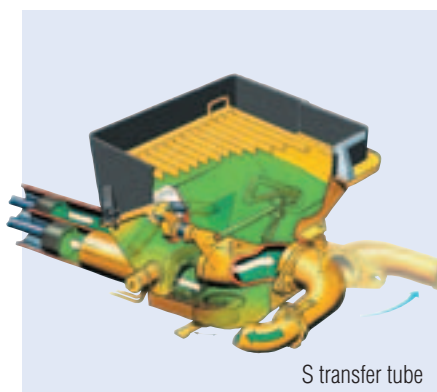
### More reliability, greater efficiency, higher flexibility, lower costs

Supplied as standard:

- EPS (Ergonic® Pump System)
- EOC (Ergonic® Output Control)
- EGD (Ergonic® Graphic Display)
- EGD-RC (radio with display and enhanced setting options)
- Additional cable remote control

Optional:

- EBC (Ergonic® Boom Control)
- EBC with Follow Me



S transfer tube



Supplied as standard:  
Internally chromed delivery cylinders



More information  
can be found in the  
BP 3763 Ergonic® Systems brochure

### Technical data pumps

M 28-4	BSF	Output* (m <sup>3</sup> /h)	Pressure* (bar)	Stroke (mm)	Cylinder ø (mm)	Strokes/min
	...09 H	90	78	1400	230	26
	...11 H	110	78	1400	230	32
	...11 HLS	110	85	1400	250	27
	...14 H	140/88*	70/112*	2100	230	27/17*
	...16 H	160/108*	85/130*	2100	230	31/21*
	...16 H LS	160	85	2100	250	26

All data theoretical maximum values · Standard boom pipework: pressure up to max. 85 bar

\* rod side/piston side · Max. delivery rates and max. delivery pressures cannot be operated at the same time.

### The Putzmeister group

Concrete Technology PCT  
Mortar Technology PMT  
Industrial Technology PIT  
Underground Technology PUC

Right to make technical amendments reserved  
© by Putzmeister Concrete Pumps GmbH 2012  
All rights reserved  
Printed in Germany (11203Sc)

Putzmeister Concrete Pumps GmbH  
Max-Eyth-Str. 10 · 72631 Aichtal/Germany  
P.O.Box 21 52 · 72629 Aichtal/Germany  
Tel. +49 (71 27) 599-0 · Fax +49 (71 27) 599-520  
E-mail: pmw@pmw.de · www.putzmeister.com

# Putzmeister