



Truck-mounted concrete pump 49-5

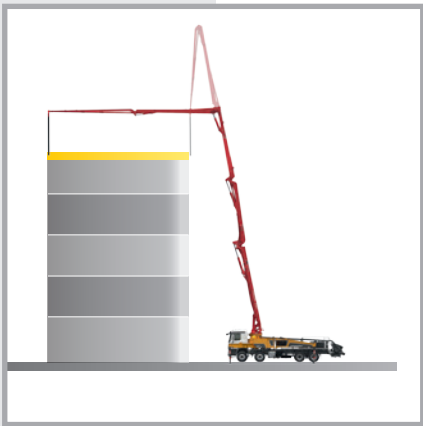
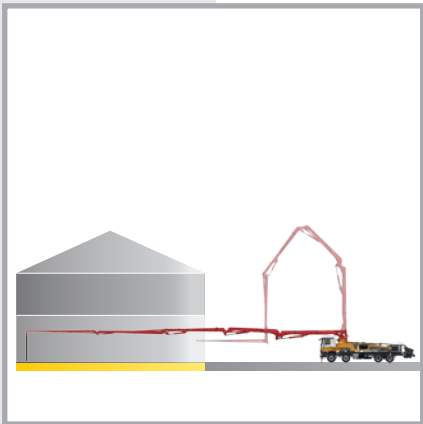
Efficiency and flexibility on 4 axles

Maximum action field and minimum space requirement

Get ahead with 5 arms

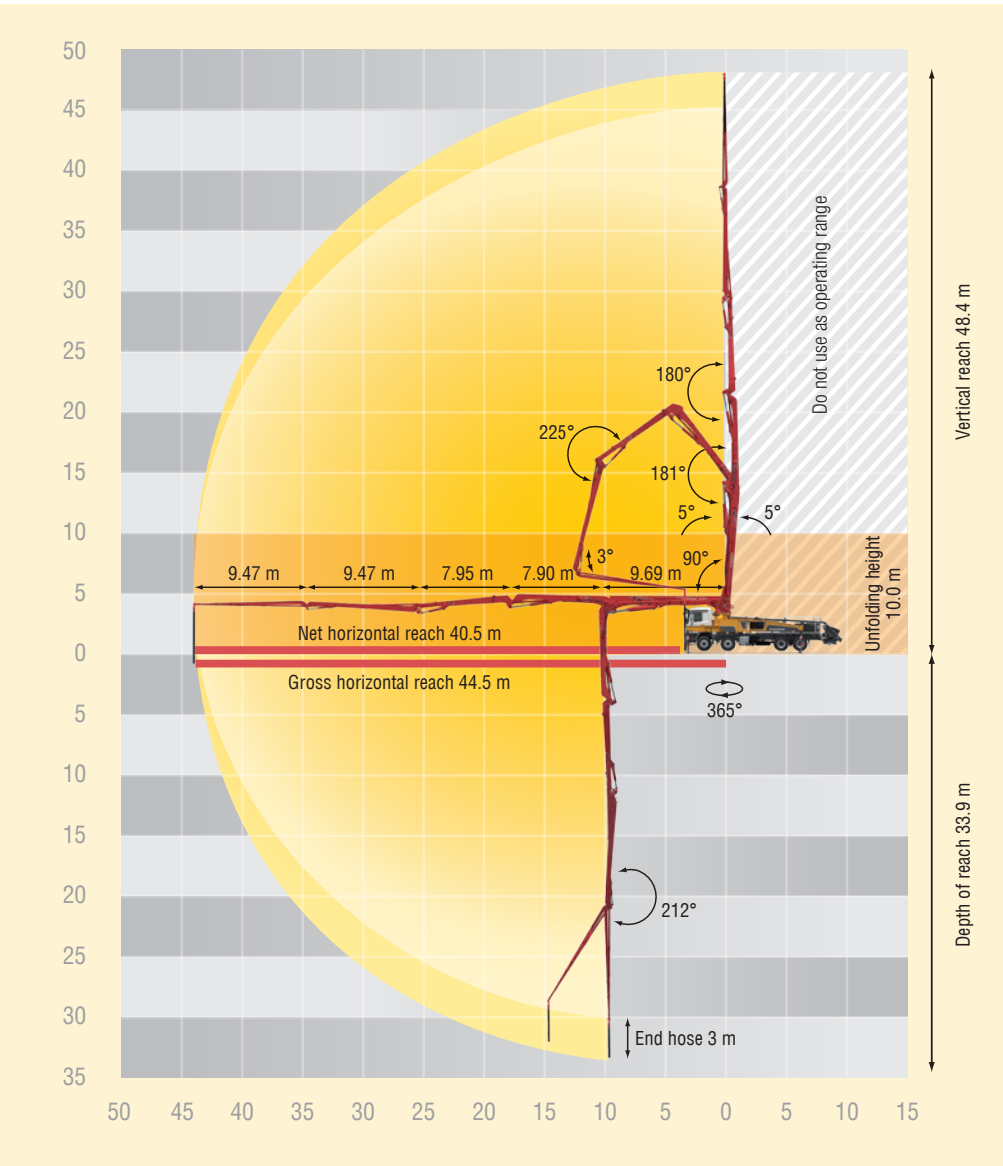
49-5, this means a 49 m vertical reach distributed over 5 arms with a compact design in roll Z-folding system. 5 arms, this means a high degree of versatility. Optimized kinematics also ensures that there is no noticeable dead space.

A placing boom in roll Z-folding system combines a compact design with a low unfolding height, optimum slip characteristics and the best use of the horizontal reach from the front edge of the truck. This means that you benefit from the advantages of the roll and of the Z-folding system in an economic way.



When reaching into buildings, the hinge of the fifth boom is crucial to reaching fully into the building interior.

The additional hinge increases not only flexibility and deployment potential but also the horizontal reach from the front edge of the truck.

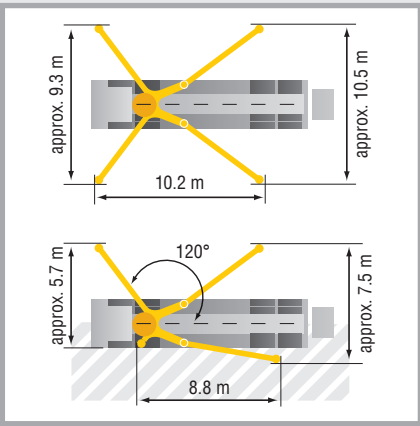


Technical data – Placing boom

| | |
|------------------|---------------------------|
| Type of folding | 5-arm roll Z-folding (RZ) |
| Vertical reach | 48.4 m |
| Horizontal reach | 44.5 m gross |
| Depth of reach | 33.9 m |
| Unfolding height | 10.0 m |
| End hose length | 3 m |
| Delivery lines | DN 125, max. 85 bar |
| Slewing circle | 365° |

Technical data – General

| Support width | front | / rear |
|----------------|----------------|----------------|
| normal | approx. 9.3 m | approx. 10.5 m |
| OSS/ESC* | approx. 5.7 m | approx. 7.5 m |
| Overall length | approx. 13.6 m | |
| Height | below 4.0 m | |



Get closer to the action with less space requirement

Set-up times can be kept as short as possible. With the TRDI support developed by Putzmeister, you save time and space, without compromising on safety.

Double telescoping support legs can also be securely placed in minimal spaces between obstacles. Thanks to the optional One Side Support (OSS*) and ESC (Ergonic® Setup Control)**, the noticeably smaller extent of support width of only around 10.5 m is reduced to approx. 7.5 m. An important side-effect: Full advantage is taken of the horizontal reach from the front edge of the truck to the fully supported side.

* OSS – Assistance device for One-Side-Support, optional. Availability depends on machine model. Not authorised for the European Economic Area (EEA).
 ** ESC (Ergonic® Setup Control) – Safety system for One-Side-Support (according to EN 12001:2012); Availability and functional scope depend on the machine model.



The pump for more power and lower costs

Thanks to their coordinated geometry, Putzmeister concrete pumps are designed for all common types of concrete. This is thanks to the closed loop of the free flow hydraulics, among other things. The drive transfers more power and saves resources because the oil reaches the cylinder with minimal losses. A great plus point for the S-transfer tube as well, which displays a particularly long life.

| Type | Delivery rate m³/h | Pressure bar | Stroke mm | Cylinder dia. mm | Strokes/min |
|---------|-----------------------|-----------------|--------------|---------------------|-------------|
| 16 H | 160 | 85 | 2100 | 230 | 31 |
| 16 H LS | 160 | 85 | 2100 | 250 | 26 |

All data represent theoretical maximum values Max. delivery rates and max. conveying pressures cannot be operated at the same time.
 Standard boom pipework: Pressure up to max. 85 bar.

Country-specific admission requirements for 4 or 5 axles must be checked. Dimensions are model-dependent and may vary. Gross weight depending on equipment and chassis ≤ 40 t

The 49-5 at a glance

- **Approx. 49 m vertical reach** with 5 arms in a roll Z-folding system
- **Comprehensive areas for use**, applications for tasks in surface construction and civil engineering, even in tight job sides
- **No noticeable dead space**, more flexibility
- **Flexible TRDI support system** with less space requirement when using OSS and ESC (Ergonic® Setup Control)
- **Pump geometry is optimally coordinated to all common types of concrete**
- **Fewer hydraulic components and reduced oil change amount** thanks to free flowing hydraulics, compared with a closed circuit
- **Particularly wear-resistant design of S-tube** guarantees long service life
- **Operator-friendly hopper**
- **Smooth, optimized pumping** with EPS and EOC, protects the pump and the vehicle



Practical equipment and accessories

- **Standard pipeline with no special pipe bends, DN 125 throughout, as far as the end hose**
- **Automatic catching of end hose when folding in the boom**
- **Easily accessible, large storage areas**
- **Powerful flushing water pump with 160 l/min and 25 bar**
- **High pressure water pump (100 bar) available as an option**
- **Lockable toolbox**
- **EPS (Ergonic® Pump System)**
- **EOC (Ergonic® Output Control)**
- **EGD (Ergonic® Graphic Display)**
- **EGD-RC (radio with display and extended adjustment options)**
- **Additional cable remote control among the products supplied**
- **Optional EBC (Ergonic® Boom Control)**

Note: The diagrams in the brochure do not necessarily correspond to the full scope of standard equipment for the machines.
Further brochures: Ergonic® 4690



Putzmeister Concrete Pumps GmbH

Max-Eyth-Straße 10 · 72631 Aichtal / Germany
P.O.Box 2152 · 72629 Aichtal / Germany
Phone +49 7127 599-0 · Fax +49 7127 599-520
pmw@pmw.de · www.putzmeister.com

