

# Truck-mounted concrete pump M 31-5

The versatile one with the flexible 5-arm boom

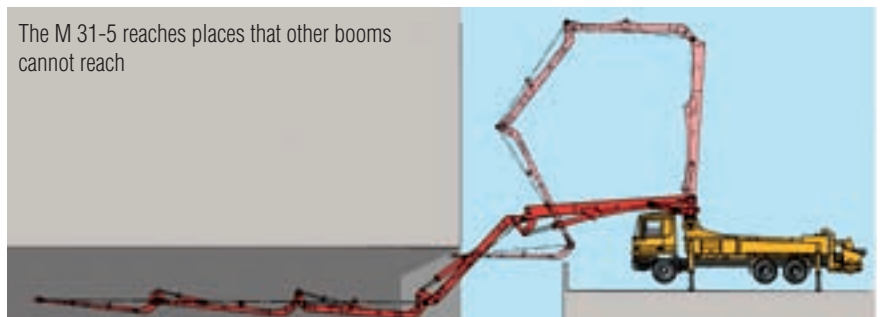
**Putzmeister**



# The hall master – almost unbeatable in tight spaces

## Flexible like no other: M 31-5 with 5-arm boom in Multi-Z-roll-fold system

- Optimally flexible 5-arm boom without dead zones and with excellent slip characteristics
- Thanks to the unique Ergonic® Boom Control (EBC), extremely easy to control boom (optional)
- Extremely low unfolding height in the 30 m class: Only 5.7 m!
- It can cope with 25-concreting areas in low buildings without changing the location, thus saving valuable time
- The high level of flexibility of the Multi-Z-roll-fold provides real net reaches. In high-rise buildings, for example, a good few metres of net reach can be equalised, compared with other booms.
- Ready for concreting in very short time
- Standard delivery line continuously up to boom tip – simpler delivery line and lower costs compared to a telescopic solution



## Compact, versatile and reliable – in traffic and on the construction site

- The compact design without overhang makes the M 31-5 manoeuvrable in urban areas and on the construction site
- Flexibility up to the loading areas: The modular design makes it possible to adjust the M 31-5 exactly to your requirements.



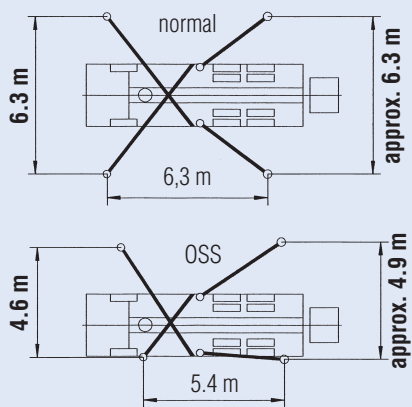
Thanks to the minimal unfolding height of only 5.7 m, the M 31-5 is unbeatable for hall concreting



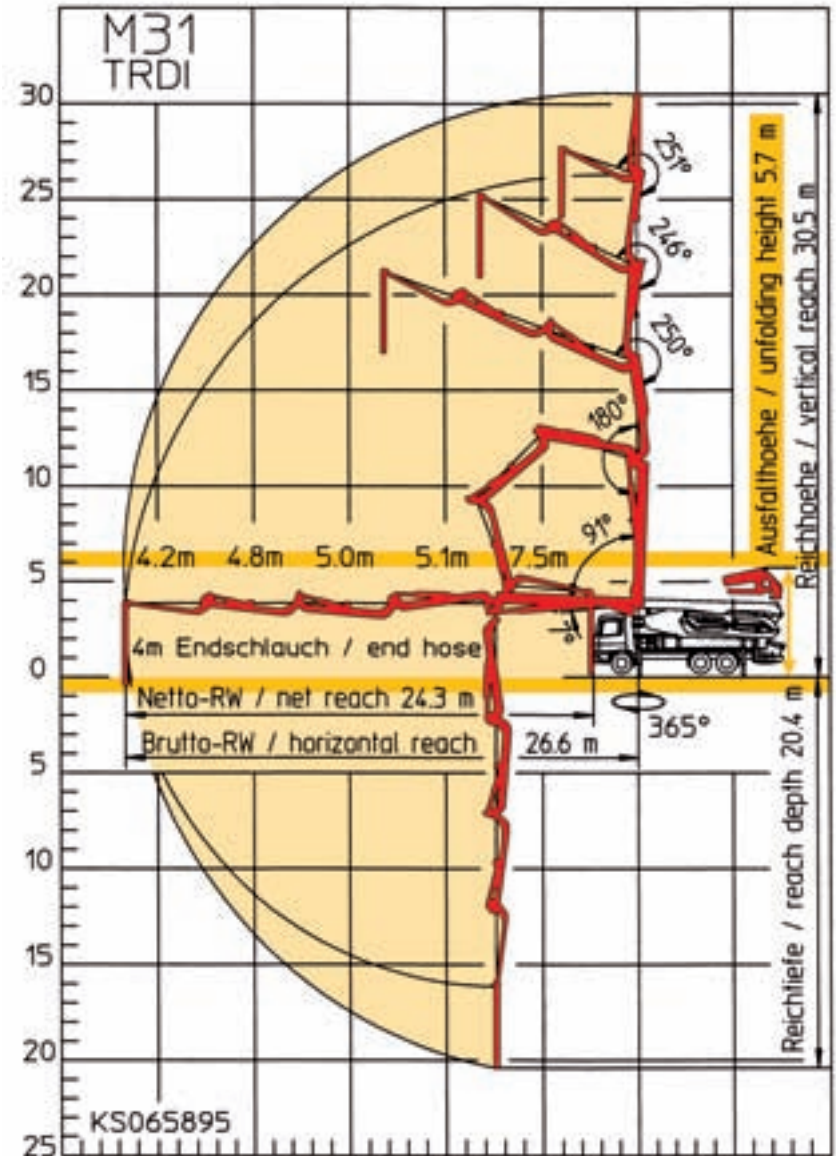
## Technical data

### Boom M 31-5

Folding type	5-section Multi-Z-roll-fold (MZR)
Vertical reach	30.5 m
Horizontal reach	26.6 m gross
Reach depth	20.4 m
Unfolding height	5.7 m
Length endhose	4 m
Delivery line	DN 125, max. 85 bar
Slewing range	365°
Support width	front / rear
normal	6.3 m / 6.3 m
OSS	4.6 m / 4.9 m



Dimensions may vary depending on superstructure, height in total  $\leq 4000$  mm, width in total  $\leq 2500$  mm. Weight depending on equipment and chassis.



### Robust technology: pumps, hydraulic system and hopper

- Proven reliability – the S-transfer tube
- Free flow hydraulic system in a closed circuit (almost the only manufacturer)
- Fewer switchovers thanks to large cylinder volumes

- Extremely wear-resistant
- Very smooth running
- Low-maintenance modular pump unit
- High cylinder fill level
- Longer service life thanks to internally chromed delivery cylinders, as standard
- Low hopper fill level of approx. w130 cm (unsupported)
- Operator-friendly hopper
- Powerful pumps available for any application

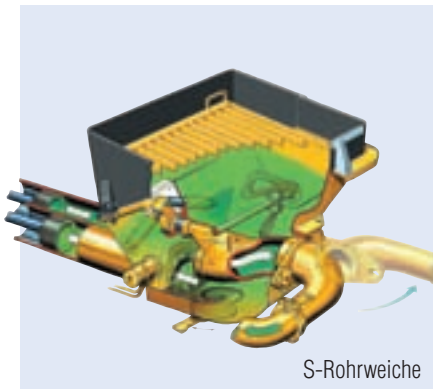
### More reliability, greater efficiency, higher flexibility, lower costs

Supplied as standard:

- EPS (Ergonic® Pump System)
- EOC (Ergonic® Output Control)
- EGD (Ergonic® Graphic Display)
- EGD-RC (radio with display and enhanced setting options)
- Additional cable remote control

Optional:

- EBC (Ergonic® Boom Control)
- EBC with Follow Me



S-Rohrweiche



Serienmäßig  
innenverchromte Förderzylinder



Mehr Informationen  
finden Sie im Prospekt  
BP 3763 Ergonic® Systeme

### Technical data pumps

M 31-5	BSF	Output* (m <sup>3</sup> /h)	Pressure* (bar)	Stroke (mm)	Cylinder ø (mm)	Strokes/min
	... 11 H	110	78	1400	230	32
	... 14 H	140/88*	70/112*	2100	230	27/17*
	... 16 H	160/108*	85/130*	2100	230	31/21*
	... 16 H LS	160	85	2100	250	26

All data theoretical maximum values · Standard boom pipework: pressure up to max. 85 bar  
\* rod side/piston side · Max. delivery rates and max. delivery pressures cannot be operated at the same time.

### The Putzmeister Group

Concrete Technology PCT · Mortar Technology PMT  
Pipe Technology PPT · Water Technology PWT  
Industrial Technology PIT · Belt Technology PBT  
Underground Technology PUC

Right to make technical amendments reserved  
© by Putzmeister Concrete Pumps GmbH 2010  
All rights reserved  
Printed in Germany (21012Sc)

Putzmeister Concrete Pumps GmbH  
Max-Eyth-Str. 10 · 72631 Aichtal/Germany  
P.O.Box 21 52 · 72629 Aichtal/Germany  
Tel. +49 (71 27) 599-0 · Fax +49 (71 27) 599-520  
E-mail: pmw@pmw.de · www.putzmeister.com

# Putzmeister